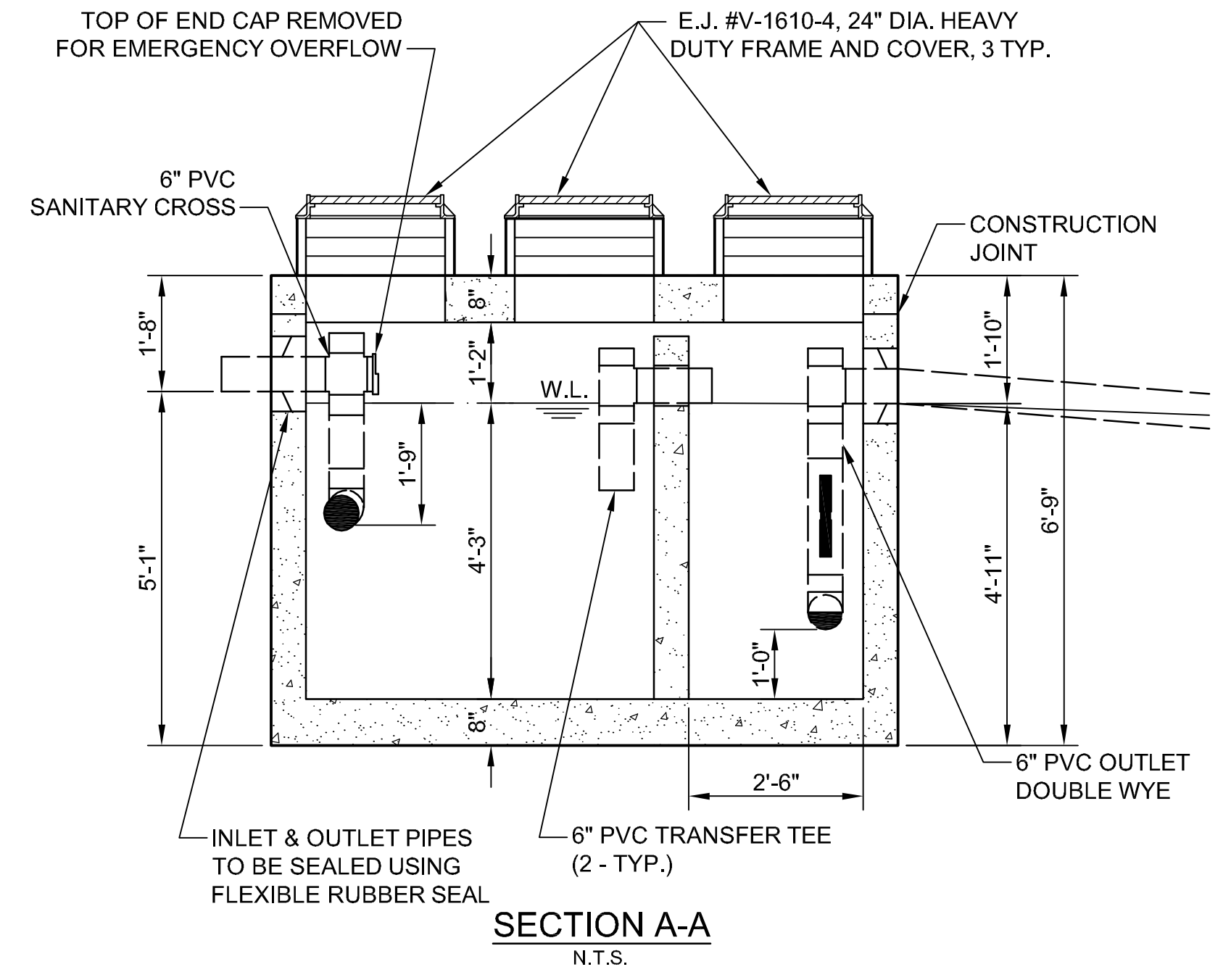
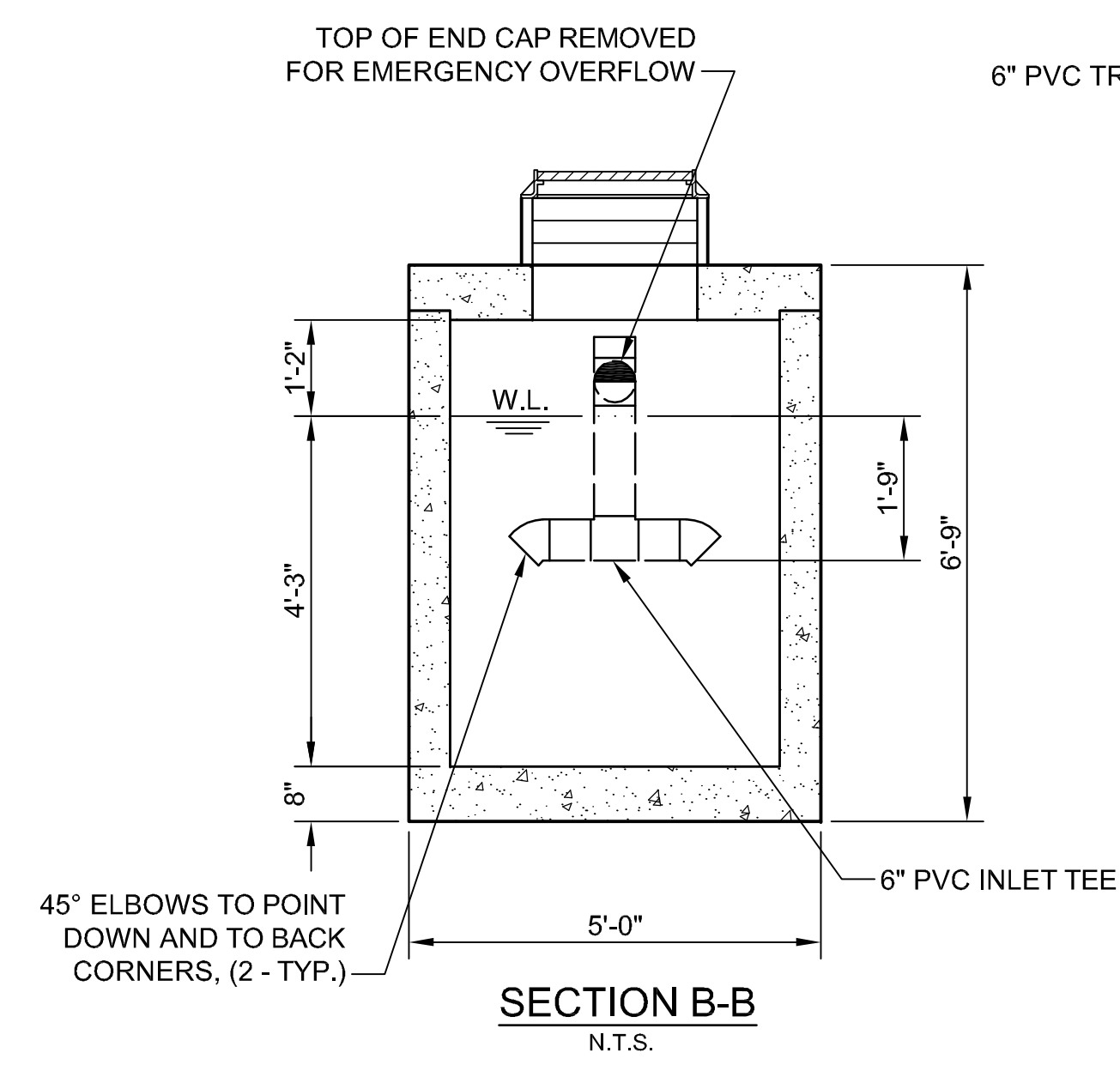


**1000 GALLON GREASE TRAP**  
N.T.S.

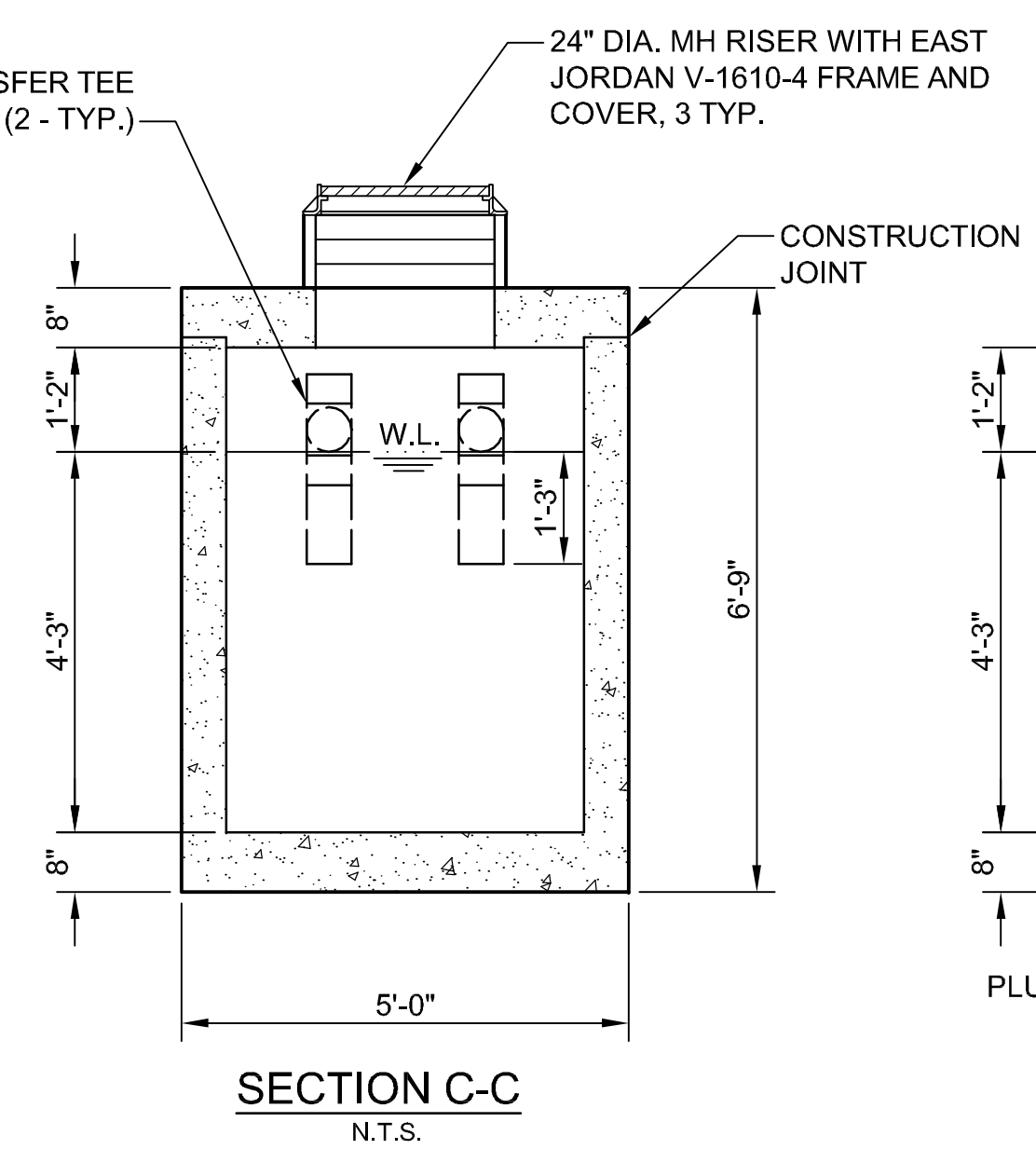
- NOTE:**
1. REINFORCED PRECAST CONCRETE SHALL HAVE A COMPRESSIVE STRENGTH OF 5000 PSI AT 28 DAYS.
  2. CONSTRUCTION JOINTS TO BE SEALED WITH 1" CONSEAL CS-102 SEALANT.
  3. SHALL MEET HS-20-44 OR EQUAL TRAFFIC-BEARING-LOADING.
  4. THE ACCESS MANHOLES AND INSPECTION WELL SHALL BE PROVIDED WITH AN INFLOW PREVENTER AND INTERNAL CHIMNEY SEAL.
  5. EACH STRUCTURE SHALL BE PLACED ON A BED OF #57 CRUSHED LIMESTONE OR WASHED GRAVEL NO LESS THAN 6" IN DEPTH ON COMPACTED SUBGRADE.
  6. THE STRUCTURE WILL NOT BE MAINTAINED BY THE CITY OF AKRON.
  7. THE STRUCTURE IS TO BE INSTALLED OUT OF THE PUBLIC RIGHT-OF-WAY.
  8. TYPICAL DESIGN WILL VARY BY MANUFACTURER.
  9. ANY VARIANCE FROM THIS DETAIL MUST HAVE PRIOR APPROVAL FROM THE CITY OF AKRON.



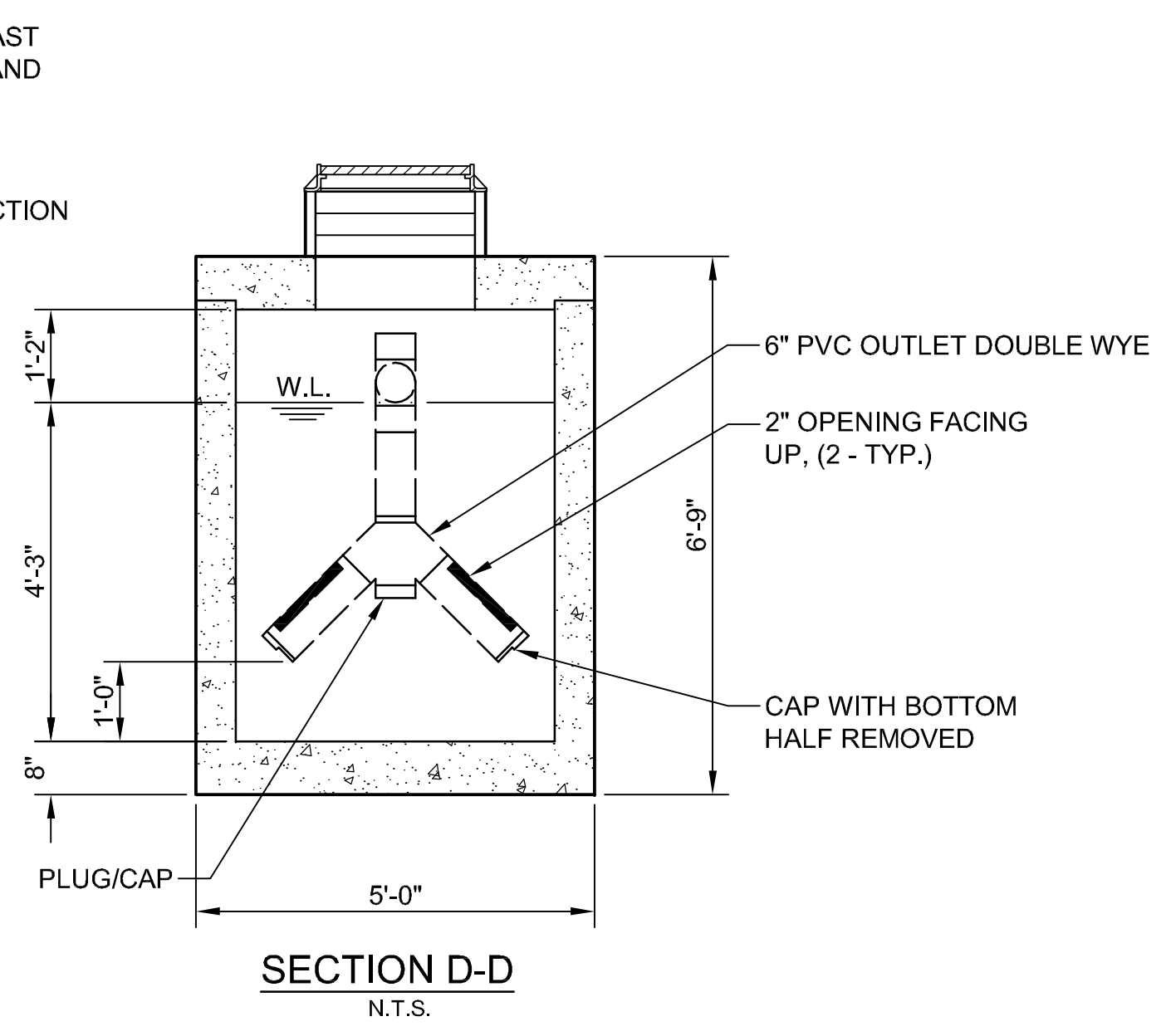
**SECTION A-A**  
N.T.S.



**SECTION B-B**  
N.T.S.



**SECTION C-C**  
N.T.S.



**SECTION D-D**  
N.T.S.

DO NOT SCALE - USE DIMENSIONS ONLY	
CITY OF AKRON BUREAU OF ENGINEERING	CONSTRUCTION STANDARD DWG. No. <b>S - 8</b>
_____ DESIGN DIVISION MANAGER	<b>1000 GALLON GREASE INTERCEPTOR AND INSPECTION WELL</b>
_____ CONSTRUCTION DIVISION MANAGER	
_____ CITY ENGINEER	
REVISIONS: October 31, 2018	